

Eaton Solutions for Nutanix

IPM Nutanix connector allows to connect to one Nutanix unit : Prism Central or Prism Element.

In this integration, the scope is to protect the User Virtual Machines or the entire cluster from power events.

Eaton IPM is set up to provide graceful shut down of the User Virtual Machines or to shutdown the cluster.

Eaton IPM uses a navigation panel to simplify the connection of IPM to the Nutanix infrastructure.

To create a Nutanix connector, the user only needs to provide the network address (or FQDN) of the Nutanix box and a valid login/password pair for the authentication. Once the connector is successfully created, a Nutanix node is created in IPM.

As soon as the connection is established, all clusters and all User Virtual Machines (UVM) are retrieved from the Nutanix box to be displayed in IPM as Cluster or Virtual Machine nodes.

"Configuration policies" and "advanced events and actions" features of IPM can be configured to ensure the protection of Nutanix environment, in case of a power or environmental event. Two type of policies are available :

- **Cluster shutdown** : The cluster are now monitored, and it's possible from IPM to perform graceful shutdown.
- **VM management** : The UVM nodes are now monitored and IPM provides the ability to apply the following actions: On, Off, Suspend, guest shutdown on each individual UVM.

Nutanix DashBoard

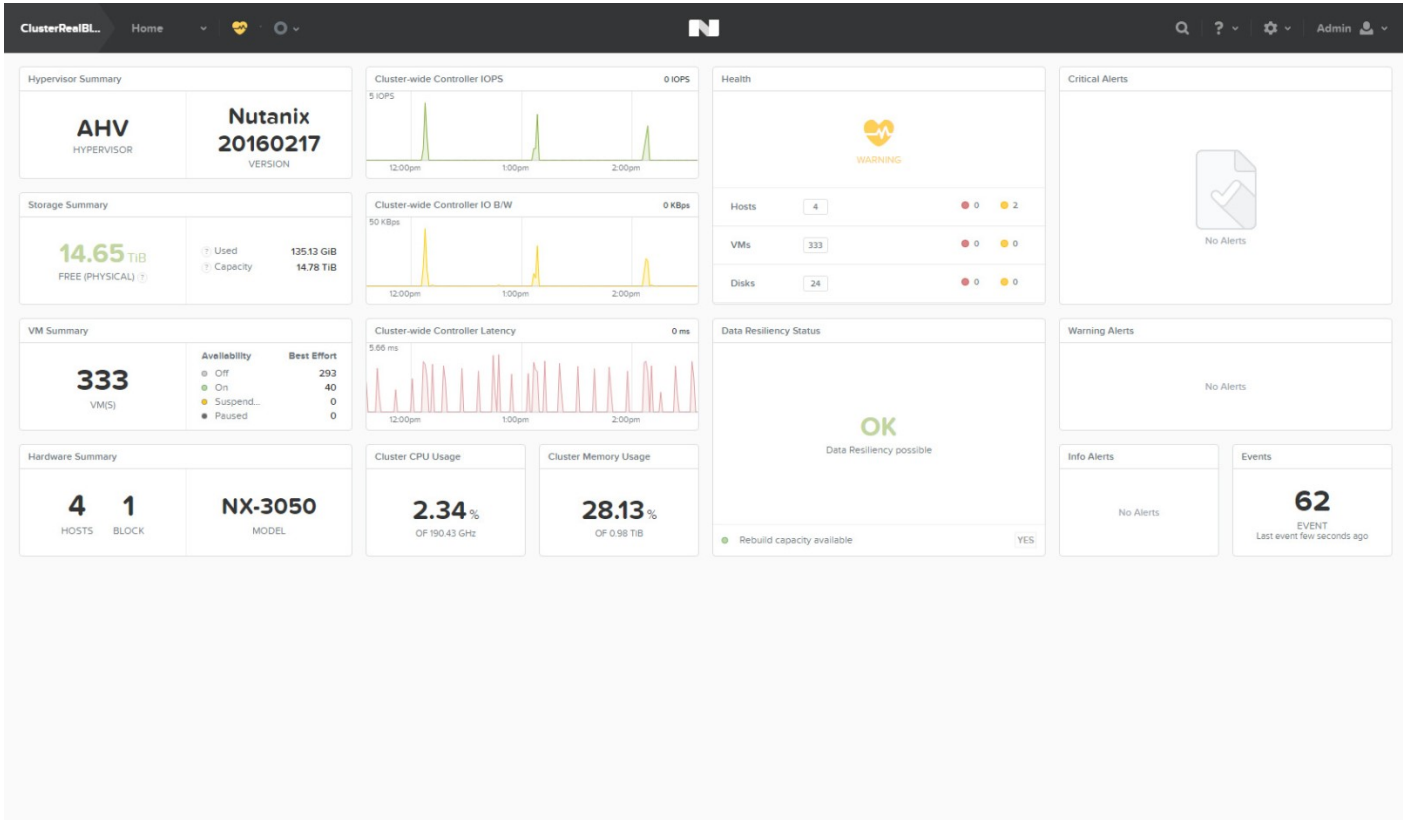


Figure 94. Infrastructure Connector Screen

Create Nutanix connector

1. From the left side navigation panel, select Infrastructure Connectors. Once you have selected Infrastructure Connectors a new screen will open. At the top right side of the page, click on Add a Connector.

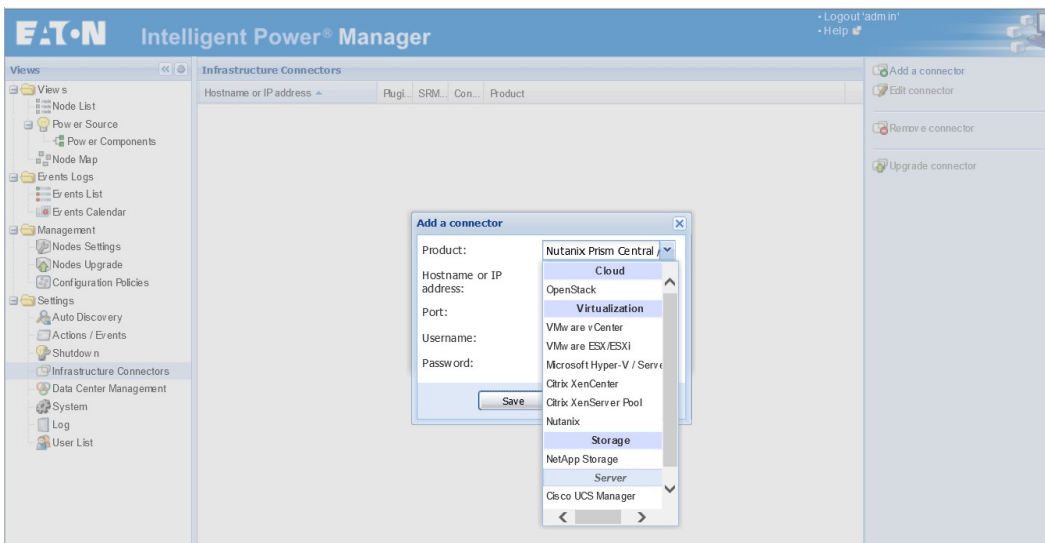
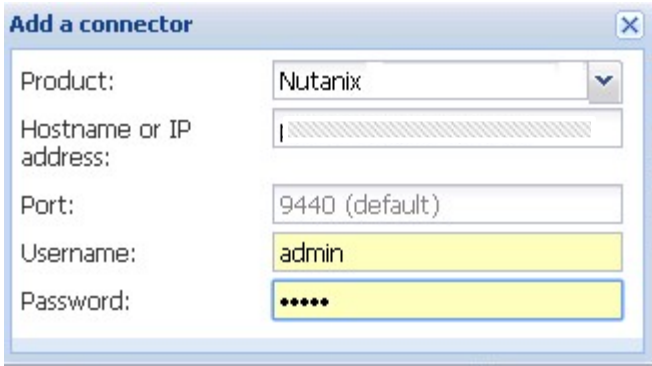


Figure . Add Connector Screen

2. Select Nutanix as shown on the screen shot directly above.
3. Configure it with host name, user name and a password of the Nutanix system.



Add a connector

Product: Nutanix

Hostname or IP address: |

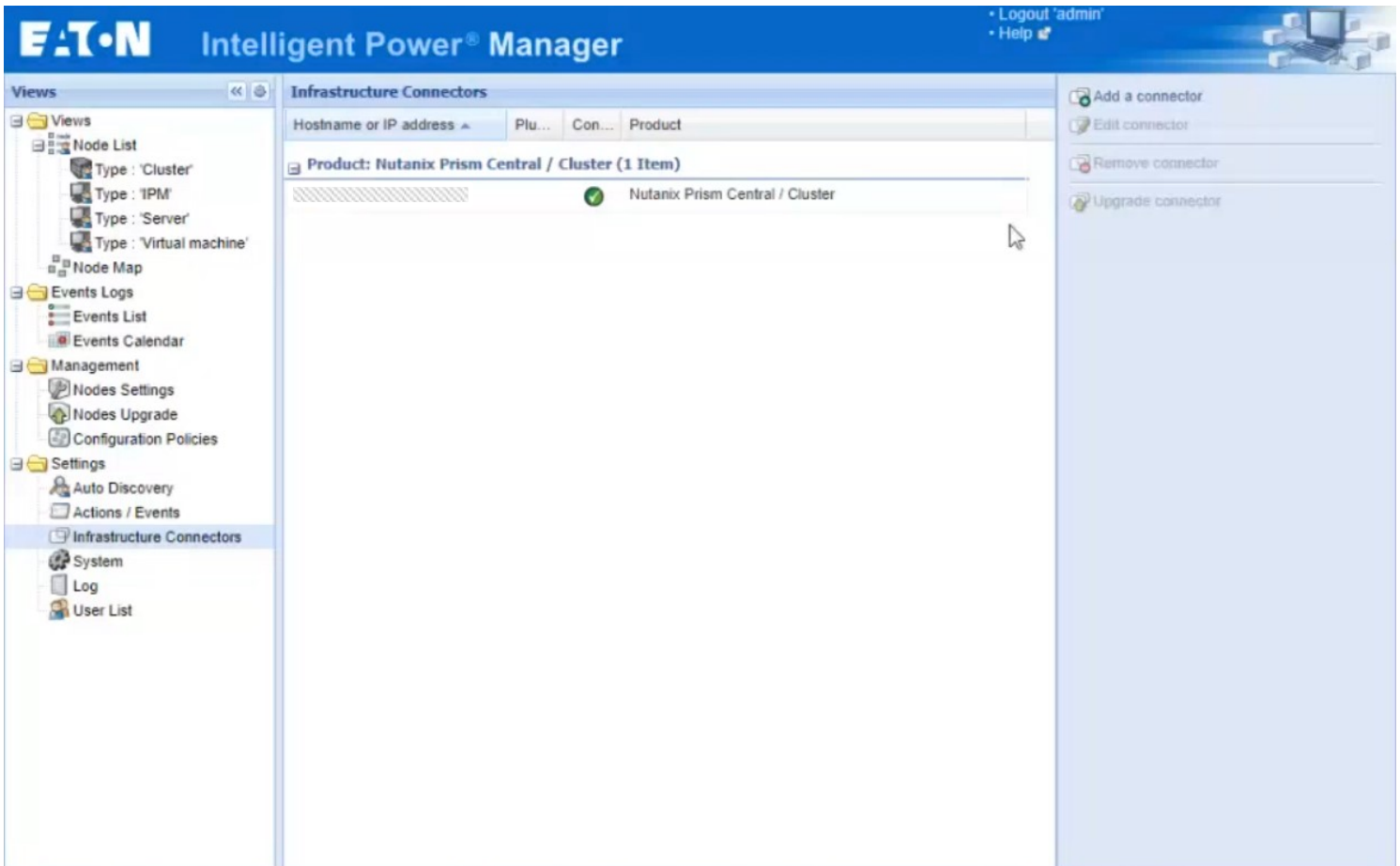
Port: 9440 (default)

Username: admin

Password: ●●●●●●

Figure. Add Connector User Name/Password

4. Check that the communication are Ok



EATON Intelligent Power® Manager

• Logout 'admin'
• Help

Views

- Node List
 - Type: 'Cluster'
 - Type: 'IPM'
 - Type: 'Server'
 - Type: 'Virtual machine'
- Node Map
- Events Logs
 - Events List
 - Events Calendar
- Management
 - Nodes Settings
 - Nodes Upgrade
 - Configuration Policies
- Settings
 - Auto Discovery
 - Actions / Events
 - Infrastructure Connectors**
 - System
 - Log
 - User List

Infrastructure Connectors

Hostname or IP address	Plu...	Con...	Product
Product: Nutanix Prism Central / Cluster (1 Item)			
		✓	Nutanix Prism Central / Cluster

• Add a connector
• Edit connector
• Remove connector
• Upgrade connector

Figure. Communication Check

Display Nutanix Clusters and UVM data

Select the Node List panel and create a filter by type, you will see the cluster list or the VM list that you see on the Nutanix UI.

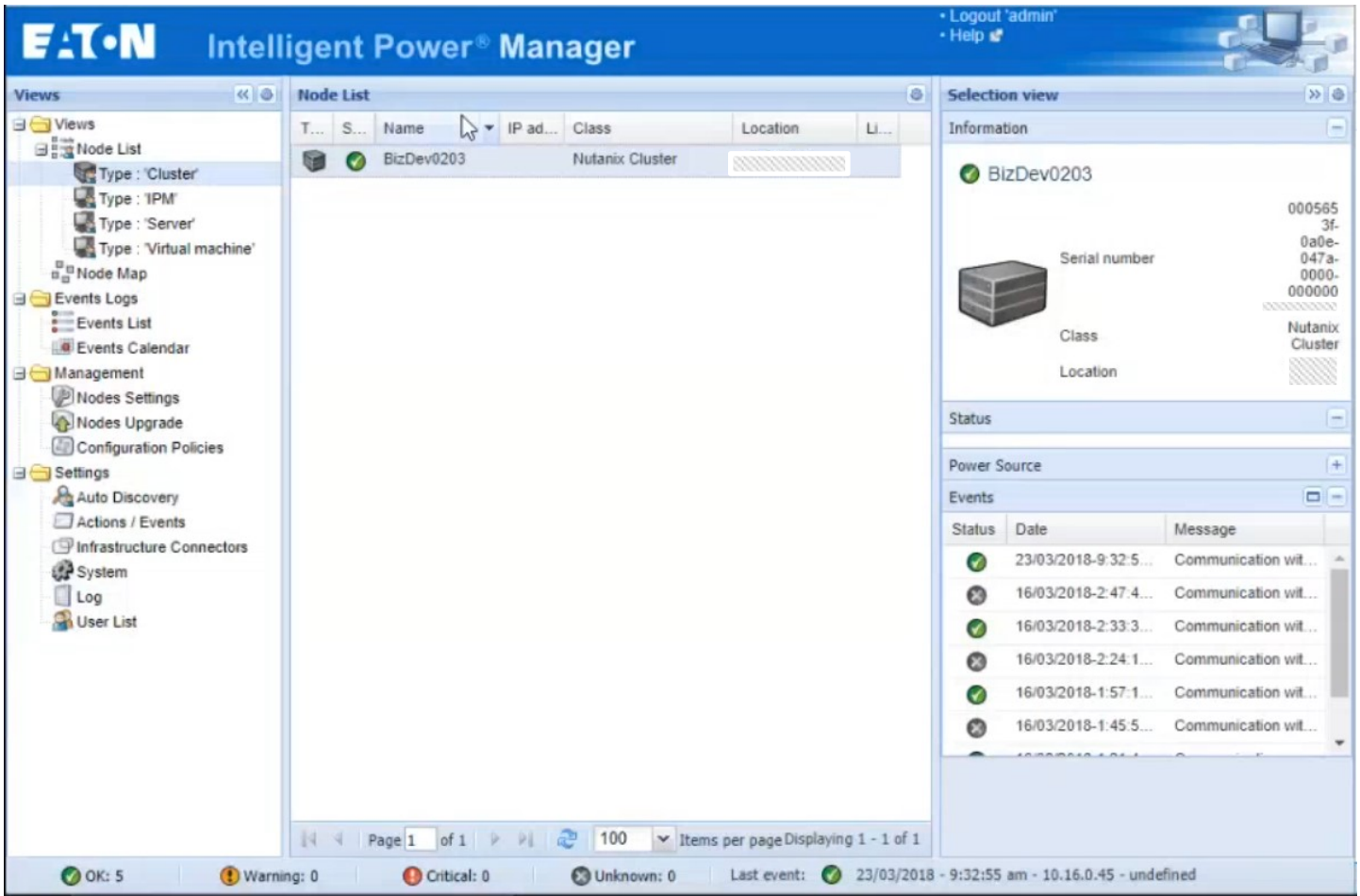


Figure. Node List Cluster Filter

The screenshot displays the Eaton Intelligent Power Manager interface. The main window is titled "Node List" and shows a table of virtual machines. The table has columns for Type, Status, Name, Description, Location, Contact, and Link. The "Type" column is filtered to show only "Virtual machine" entries. The "Status" column shows green checkmarks for all entries. The "Name" column lists various VMs such as VM-Kali-6, VM-115, VM-112, VM-100, VM-108, VM-Kali-5, VM-Kali-3, VM-111, VM-117, VM-Azurelien-5, VM-1, VM-Kali-2, VM-116, VM-101, VM-102, VM-10, VM-Azurelien-1, VM-103, VM-Kali-7, VM-106, VM-17, VM-12, VM-Kali-10, VM-Kali-8, and VM-114. The "Description" column for all entries is "Nutanix: virtual machine" and the "Location" is "ClusterRealBlock".

On the right side, the "Selection view" for VM-100 is shown. It includes an "Information" section with fields for Description, IP address, Serial number (8850c108eb9e), Class, and Location (Nutanix: virtual machine, ClusterRealBlock). The "Status" section shows "Connection state" as Connected, "Power state" as Powered On, and "Tools running state" as Not running. The "Power Source" section is also visible. Below this, an "Events" table shows two entries: one from 29/08/2016-14:28:42 with the message "Communication restored" and another from 29/08/2016-14:28:41 with the message "Communication with devic...".

The bottom status bar shows system health: OK: 43, Warning: 0, Critical: 294, Unknown: 0. The last event is "29/08/2016 - 14:28:46 - VM-Luc-9 - Communication restored". The IP address 127.0.0.1:4679/# is also displayed.

Figure 98. Node List VM Filter

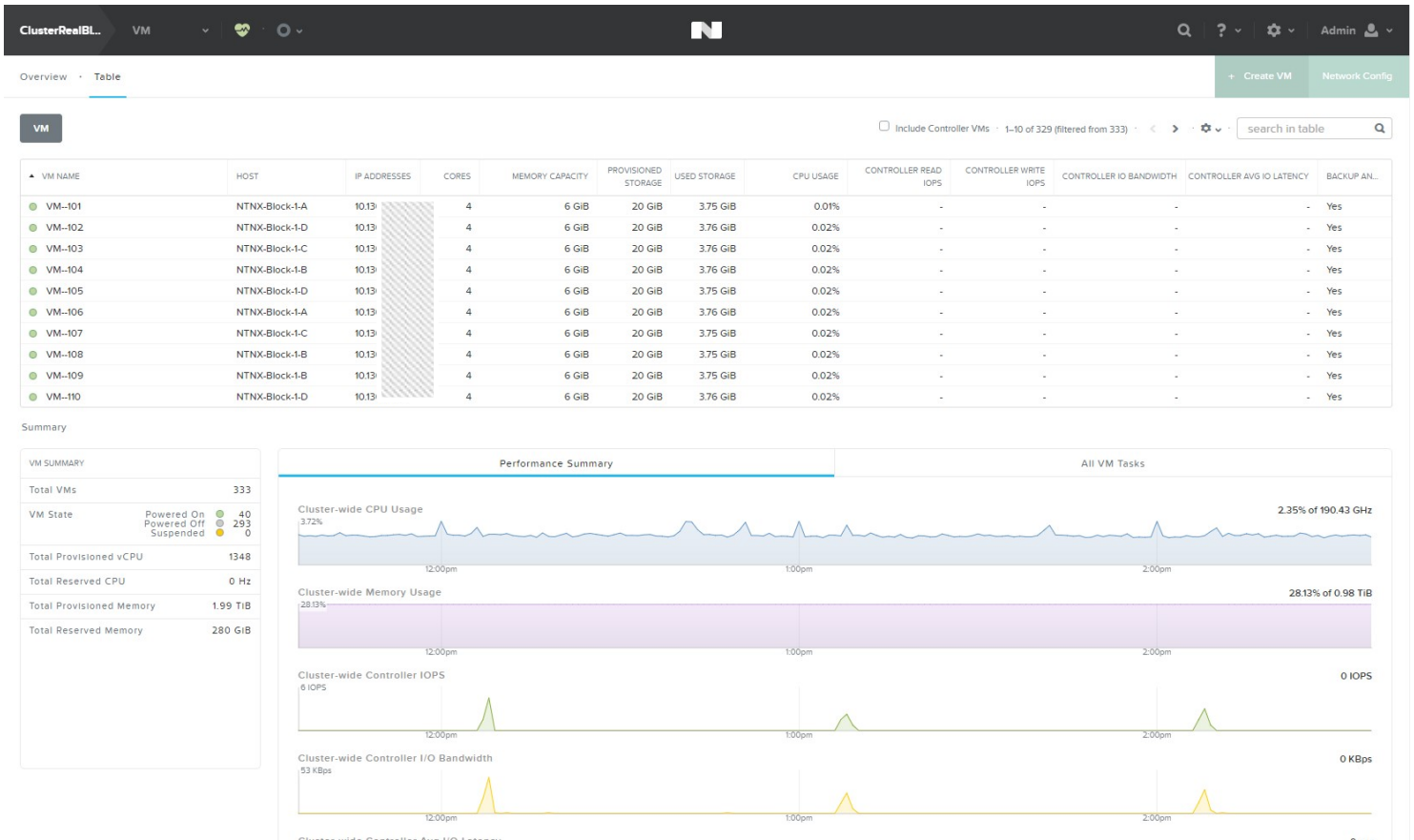


Figure. Node List VM Filter Nutanix

Configure Nutanix Actions

To configure a Nutanix action, you should become familiar with creating actions in IPM by reading the section Advanced events and actions.

Main features for Nutanix :

- **Cluster shutdown** : possibility to perform graceful shutdown.
- **VM power action**: The UVM nodes are now monitored and IPM provides the ability to apply the following actions: On, Off, Suspend, guest shutdown on each individual UVM.

Cluster shutdown

Edit action

Action active:

Action name*: shutdown

Events List*: List of events which will trigger this action

Event Source: Any source

Action type*: Cluster shutdown

Action Settings:

Name	Value	
The cluster ta...	BizDev0203	
Critical VMs	crit vms	
VM shutdown...	30	
VM migration ...	120	


Save Cancel


VM Power Actions


Edit action Recipient: recipient@server.com ✕

Action active:




Action name*:

Events List*: 

Event Source: 

Action type*: 


Action Settings:


Name	Value	
Power comma...	Power ON	
The VM target*	VM01 (AHV01)	
Shutdown que...	0	


Edit action Recipient: recipient@server.com ✕

Action active:

Action name*:

Events List*: 

Event Source: 

Action type*: 

Action Settings:




Name	Value	
Power comma...	Power OFF	
The VM target*	VM01 (AHV01)	
Shutdown que...	0	

Figure. Configure Start and Stop Action